



Controls for a world in motion

# ELECTRONIC THROTTLE CONTROLS PANEL MOUNT - LEVER ACTUATED



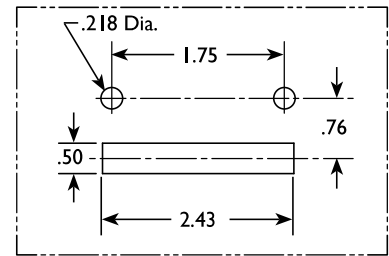
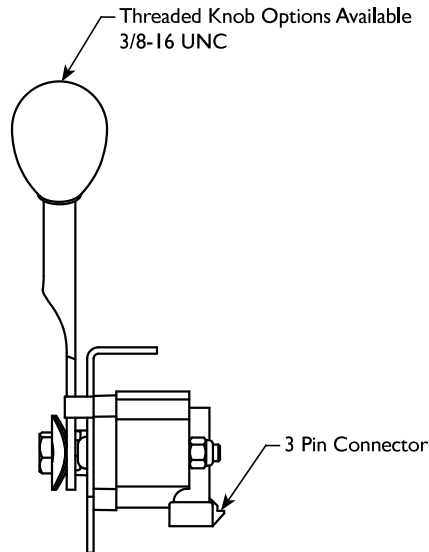
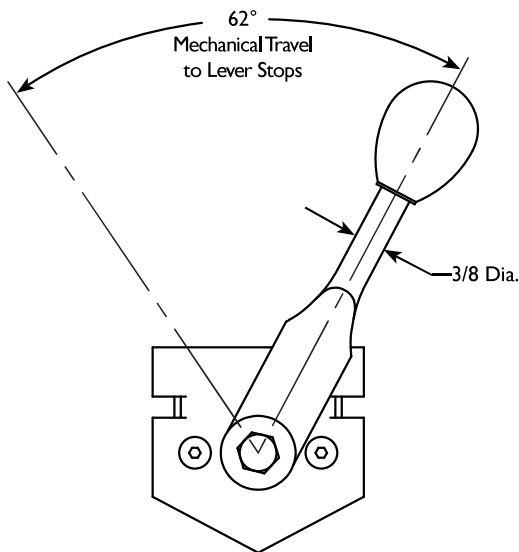
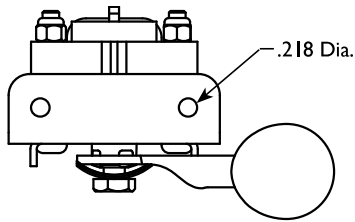
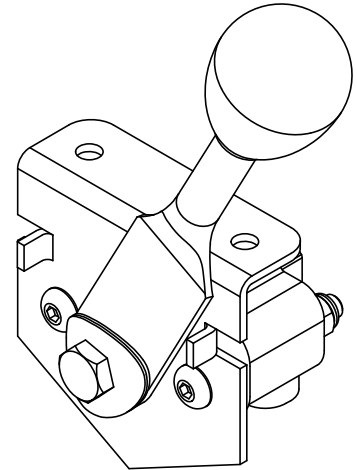
**WESCON CONTROLS**

## 12-I375 Series Panel Mount Electronic Throttle Control

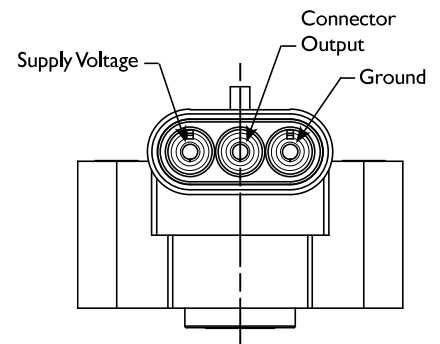
**Materials:** Lever 3/8 Dia.  
Bracket 14 Ga. (.074)

**Finish:** Plated for Corrosion Protection

- 0-5Vdc Single Analog Variable Output  
Works With: Kawasaki, Yanmar, Briggs & Stratton, Kubota Engines
- 0-10Vdc Single Analog Variable Output  
Works With: Kohler Engines
- Hall Effect Electronic Sensor Standard
- Packard Electric Weather Pack 3 Pin Connector Standard
- .218 Dia. Mounting Holes Standard
- 62° Integrated Lever Stops Standard



**Panel Cutout Detail  
Rod Style Lever**



**Packard Electric Weather Pack  
Mates to Delphi P/N 12015793**

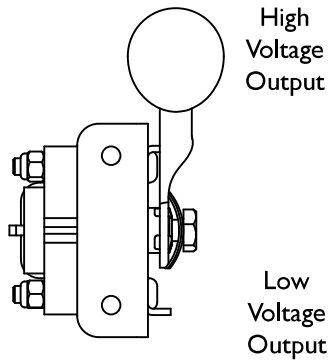
Fill in your requirements and fax to Wescon at 316-942-5114.  
 Visit our website at [www.wesconproducts.com](http://www.wesconproducts.com).

Company Name: \_\_\_\_\_ Contact Person: \_\_\_\_\_

Phone : \_\_\_\_\_ Fax: \_\_\_\_\_ E-Mail: \_\_\_\_\_

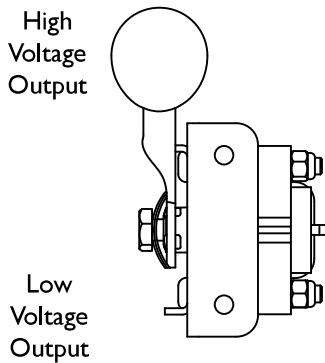
Estimated Annual Usage: \_\_\_\_\_

## Configuration Options



### Left Side of Slot Mount (L.S.S.)

ENGINE	VOLTAGE OUTPUT	VOLTAGE OUTPUT		PART NUMBER
		LOW	HIGH	
Kubota	0-5 V	0.5	4.5	24-1375-01
Kohler	0-10 V	1.0	9.0	24-1375-03
Kawasaki	0-5 V	.75	4.25	24-1375-05

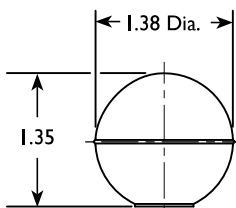


### Right Side of Slot Mount (R.S.S.)

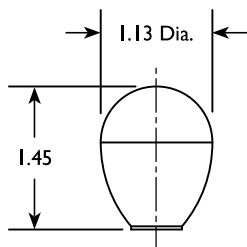
ENGINE	VOLTAGE OUTPUT	VOLTAGE OUTPUT		PART NUMBER
		LOW	HIGH	
Kubota	0-5 V	0.5	4.5	24-1375-02
Kohler	0-10 V	1.0	9.0	24-1375-04
Kawasaki	0-5 V	.75	4.25	24-1375-06

## Knob Options

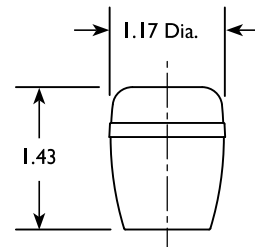
(Purchase Separately in Bulk)



30-3137-02



30-1001-06



17-0500-01

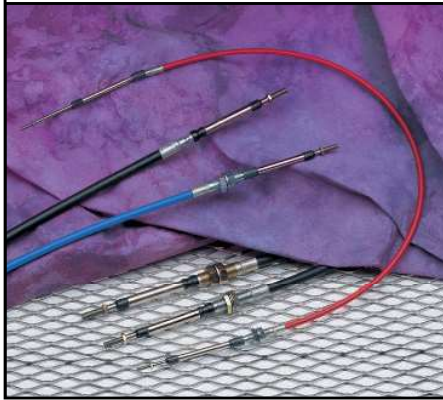
# TAKE A LOOK AT OTHER WESCON PRODUCTS



LIGHT DUTY MECHANICAL  
CONTROL SYSTEMS



PUSH-PULL CABLES  
CONTROL SYSTEMS



PANEL  
CONTROL SYSTEMS



BRAKE CABLE  
AND LEVER SYSTEMS



REMOTE VALVE  
CONTROL SYSTEMS



ROTARY PUSH-PULL  
LEVER CONTROL SYSTEMS



Controls for a world in motion

## WESCON CONTROLS, LLC

2533 S. West Wichita, Kansas 67217  
316-942-7266 or call toll free 1-800-835-0160

Fax 316-942-5114

[www.wesconcontrols.com](http://www.wesconcontrols.com)

ISO 9001 CERTIFIED